

Rosários 4[®]

257

Spring . Summer

Rosal



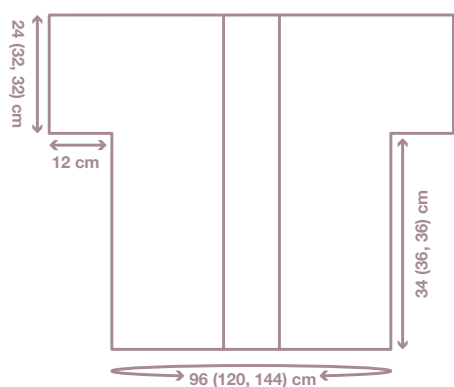
DESIGN
FILIPA CARNEIRO

BIO LOVE


100% Organic
Cotton


100% Natural
Origin Fibres

Rosal



GAUGE

29 sts and 8 rows – 12 x 8 cm in lace stitch pattern (**chart A**) with 3 mm hook, washed and blocked (*it's important to wash and block your swatch in order to get the correct gauge*).

YARN

5 (7, 8) skeins of Bio Love from Rosários 4, in colour 06 (100% organic cotton, 50g/175m).

NEEDLES

3,0 mm crochet hook (*if necessary, adjust the needle size to match the gauge*).

NOTIONS

Tapestry needle.

SIZES

XS/S, M/L, XL/XXL

FINISHED MEASUREMENTS

96 (120; 144) cm final bust measurements (*refer to schematic for more measurements*) – **approx. 20 cm of positive ease included.**

INSTRUCTIONS

BACK

Work 114 (142, 170) ch sts and work bottom hem:

Row 1: 1sc in 2nd ch, 1sc in each ch to end. [113 (141, 169) sts]

Row 2: 1ch, 1sc in each st. [113 (141, 169) sts]

Work lace pattern following **chart A** with **7 (9, 11) repeats** of the marked area.

Repeat the 8 rows of chart A, 3 (4, 4) more times (a total de 4 (5, 5) repeats of chart). Back piece should measure approx. 34 (36, 36) cm height. Leave on hold without binding off or cutting the yarn.

SLEEVES

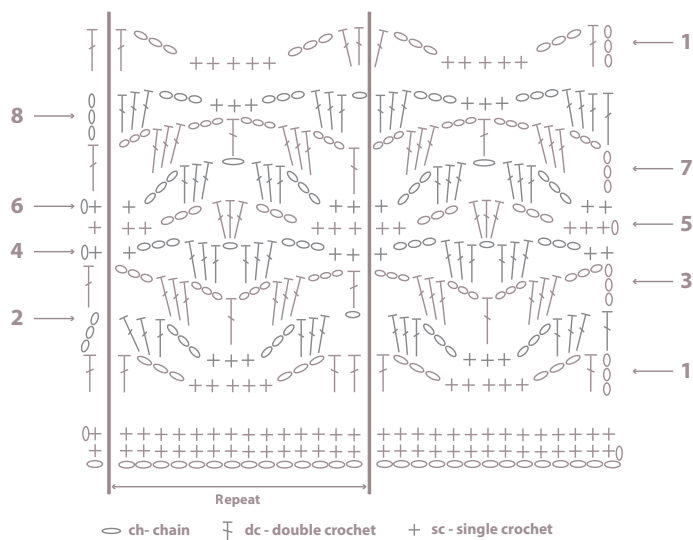
1 – with a new strand of yarn and with RS facing, join yarn in top left corner and ch28. Work an extra ch, pull the yarn trough to close and cut strand.

2 – Go back to the back piece left on hold and ch28 [169 (197, 225) sts on back].

Continue working in lace pattern following **chart A** or corresponding written instruction, but now with **11 (13, 15) repeats** of marked area.

Repeat all 8 rows of chart A, 3 (4, 4) times. Sleeve should measure approx. 24 (32, 32) cm height. At this moment we leave the 27 middle sts without work (for back neck) and continue working on the front pieces.

CHART A



RIGHT FRONT

Continue working in lace pattern following **chart A** or corresponding written instruction, but now with **4 (5, 6) repeats** of marked area – [71 (85, 99) pts in right front]. Repeat all 8 rows of chart A, 3 (4, 4) times.

Work 28 slip sts to skip sleeve sts – [43 (57, 71) sts in front].

Continue working in lace pattern following **chart A** or corresponding written instruction, but now with **2 (3, 4) repeats** of marked area. Repeat all 8 rows of chart A, 4 (5, 5) times.

Work bottom hem:

Rows 1 and 2: ch1, 1sc in each st to end of row.

LEFT FRONT

Join a new strand of yarn and with RS facing, start working left front piece being sure to leave 27 sts unworked from right front edge – [71 (85, 99) sts in left front].

Continue working in lace pattern following **chart A** or corresponding written instruction, but now with **4 (5, 6) repeats** of marked area. Repeat all 8 rows of chart A, 3 (4, 4) times.

At this moment, leave the last 28 sts unworked and continue working in lace pattern following **chart A** or corresponding written instruction, but now with **2 (3, 4) repeats** of marked area – [43 (57, 71) sts in front].

Repeat all 8 rows of chart A, 4 (5, 5) times.

Work bottom hem:

Rows 1 and 2: ch1, 1sc in each st to end of row.

FINISHING

Join side and sleeve seams with main yarn.

SLEEVE EDGING: star in seam, work 108 (144, 144) sc around sleeve edge (approx. 18 sts for every chart repeat, that means, for every 8 rows). Join to first st with slip st and cut yarn. Repeat for the other sleeve.

FRONT EDGING: work 284 (356, 356) sc along right front edge, back neck sts and left front edge (1 st for every single crochet rows on the bottom hem; approx. 18 sts for every chart repeat, that means, for every 8 rows; plus, the 27 sts on back neck opening). Cut yarn.

Weave in all ends and wet block your garment to finished measurements.

ABBREVIATIONS

ch: chain stitch

sc: single crochet

dc: double crochet

st/sts: stitch/stitches

approx.: approximately

RS: right side



40 ANOS



PURE NEW WOOL



ISO 9001

40
ANOS

Rua das Grutas, 13 - Apartado 123 2495-059 Mira de Aire - Portugal
Tel. +351 244 447 300 Fax +351 244 447 309
info@rosarios4.com www.rosarios4.com

CHART A – written instruction:

Row 1 – ch3, 1dc, ch3, 1sc in 4th st, 4sc, ch3, 1dc in 4th st, [2dc, ch3, 1sc in 4th st, 4sc, ch3, 1dc in 4th st] x REPEAT, 1dc in following st

Row 2 – ch3, [3dc in the 3-ch space bellow, ch3, 1sc in 2nd sc st bellow, 2sc in following sts, ch3, 3dc in the 3-ch space bellow, 1ch] x REPEAT, 3dc in the 3-ch space bellow, ch3, 1sc in 2nd sc st bellow, 2sc in following sts, ch3, 3dc in the 3-ch space bellow, 1dc in following st

Row 3 – ch6, 3dc in the 3-ch space bellow, ch3, 1dc in 2nd sc st bellow, ch3, 3dc in the 3-ch space bellow, ch3, [1dc in the 1-ch space bellow, ch3, 3dc in the 3-ch space bellow, ch3, 1dc in 2nd sc st bellow, ch3, 3dc in the 3-ch space bellow, ch3] x REPEAT, 1dc in following st

Row 4 – ch1, 1sc on 1st st, [1sc in the 3-ch space bellow, ch3, 3dc in the 3-ch space bellow, ch1, 3dc in the 3-ch space bellow, ch3, 1sc in the 3-ch space bellow, 1sc in following st] x REPEAT, 1sc in the 3-ch space bellow, ch3, 3dc in the 3-ch space bellow, ch1, 3dc in the 3-ch space bellow, ch3, 1sc in the 3-ch space bellow, 1sc in following st

Row 5 – ch1, 2sc, 1sc in the 3-ch space bellow, ch3, 3dc in the 1-ch space bellow, ch3, 1sc in the 3-ch space bellow, 1sc in following st, [2sc, 1sc in the 3-ch space bellow, ch3, 3dc in the 1-ch space bellow, ch3, 1sc in the 3-ch bellow, 1sc in following st] x REPEAT, 1sc in following st

Row 6 – ch1, 1sc, [1sc, ch3, 3dc in the 3-ch space bellow, ch1, 3dc in the 3-ch space bellow, ch3, 1sc in 2nd sc st bellow, 1sc in following st] x REPEAT, 1sc, ch3, 3dc in the 3-ch space bellow, ch1, 3dc in the 3-ch space bellow, ch3, 1sc in 2nd sc st bellow, 1sc in following st

Row 7 – ch6, 3dc in the 3-ch space bellow, ch3, 1dc in the 1-ch space bellow, ch3, 3dc in the 3-ch space bellow, ch3, [1dc in 2nd sc st bellow, ch3, 3dc in the 3-ch space bellow, ch3, 1dc in the 1-ch space bellow, ch3, 3dc in the 3-ch space bellow, ch3] x REPEAT, 1dc in 2nd sc st bellow

Row 8 – ch3, [3dc in the 3-ch space bellow, ch3, 1sc in the 3-ch space bellow, 1sc on following st, 1sc in the 3-ch space bellow, ch3, 3dc in the 3-ch space bellow, ch1] x REPEAT, 3dc in the 3-ch space bellow, ch3, 1sc in the 3-ch space bellow, 1sc in following st, 1sc in the 3-ch space bellow, ch3, 3dc in the 3-ch space bellow, 1dc in following st

From now on, work **Row 1** as follows – ch3, 1dc in 2° st, ch3, 1sc in the 3-ch space bellow, 3sc in following sts, 1sc in 3-ch space bellow, ch3, 1dc in 1-ch space bellow, [2dc in the same 1-ch space bellow, ch3, 1sc in the 3-ch space bellow, 3sc in following sts, 1sc in 3-ch space bellow, ch3, 1dc in 1-ch space bellow] x REPEAT, 1dc in following st



Colour 22

BIO LOVE

(100% Organic cotton)

Rosal is one of those patters that bring together what we like the most in this season's clothes: the freshness and comfort of organic cotton, the lightness of an open floral crochet stitch and the delicate colour, essential in a summer wardrobe.