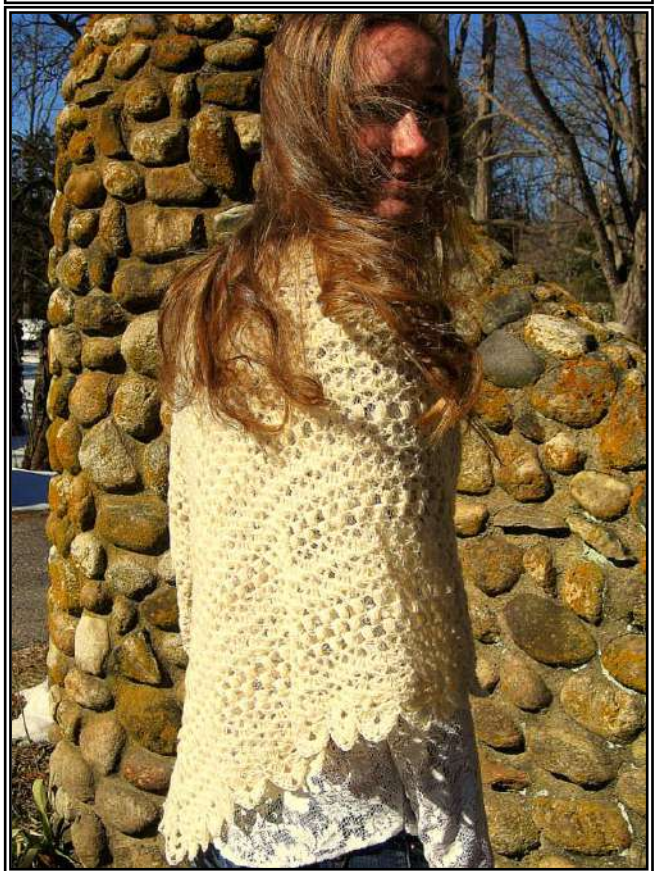


SEEMS LIKE OLD TIMES

MADuNaier
MAD Cap Fancies



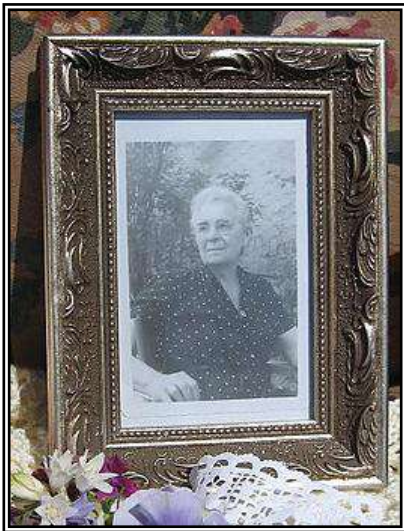
SEEMS LIKE OLD TIMES

MADuNaier
MAD Cap Fancies

I have always been fascinated by the past. The future? Not so much; it worries me more than intrigues me. But I love to look at old photos, read old books (especially if the books themselves are yellowed with age), and especially love old fashioned clothing, shawls in particular.

What did these women think, as they crocheted so long ago? Were their lives so very different from mine? In many ways, probably so. But as I crochet, especially something in a style of the past, I can almost feel myself slipping into a different place and time, at one with those who crocheted before me. My sister swears that as she is knitting, she can feel our grandmother (who was a great knitter and crocheter) there with her, enjoying those same beloved stitches, rejoicing in the ability to create a small piece of heaven.

This pattern is based on "A CROCHET SQUARE SHAWL IN TWO COLOURS," originally published in "Needlecraft Practical Journal No. 56" by Needlecraft Ltd., Manchester and London, 1906. It was reproduced by Mary Konior in her wonderful (but sadly, out of print) "Crochet Lace" in 1991.



My version differs in several ways: I made it triangular, changed the Puffs (which they called "Tufts") to make them easier, changed the corners to how I liked them, translated from British to U.S. crochet-speak, and provide directions to create the shawl in various sizes, smaller or larger than the original.

But it is still basically the same shawl my grandmother might have made in 1906. She would have been 17 years old, still living on a farm in "the old country" and quite adept by then at shawl-making. It is still a beauty today, lovely yet practical (as was my grandmother), so join me as we travel back in time to crochet it once again in celebration of my one year Design-iversary on Ravelry!

SEEMS LIKE OLD TIMES

MADuNaier
MAD Cap Fancies

Materials: Crochet hook in size G (4.00mm) for Fingering,
or H (5.00mm) for DK weight yarn
Yarn sewing needle.

Yarn: Model 1: Sirdar Snuggly 4 ply or equivalent Fingering weight yarn - 880 yards
Model 2: Plymouth Encore DK - 350 yards Garnet Heather, 185 yards Cream

Finished Size: Triangle, Model 1 (Cream): 52" wide, 30" deep,
Model 2 (Garnet & Cream): 48" wide, 24" deep

Gauge: 20 dc = 4" using size G (4.00 mm) hook and Fingering Weight

Abbreviations: **ch** = chain, **st** = stitch, **sl-st** = slip stitch
ch-sp = chain space made in previous row, **sc** = single crochet stitch,
dc = double crochet stitch
tch = top of turning chain made at start of prev row
shell = 4dc in same st
V = (dc, ch3, dc) in same stitch
shell in V = work 4dcs in ch3-sp of V in prev row
mid-shell = between the 2nd and 3rd dcs of shell
V in shell = work (dc, ch3, dc) in mid-shell in prev row
puff = (Yarn over, insert hook in st and pull up a loop) 4 times all in same st,
yarn over and pull through all 9 loops on hook.
puff in V = work a puff st in ch3-sp of V in prev row
crown = (4dcs, ch3, 4dcs) all in same st
crown in mid-shell = (4dcs, ch3, 4dcs) in mid-shell in prev row
crown in crown = (4dcs, ch3, 4dcs) in ch3-sp of crown in prev row

SEEMS LIKE OLD TIMES

MADuNaier
MAD Cap Fancies

A triangular reproduction of "A CROCHET SQUARE SHAWL IN TWO COLOURS"
published in Needlecraft Practical Journal No. 56, of Manchester and London, 1906.

Note: U.S. terminology is used in this pattern

Shawl can be made in whatever size you wish by altering the number of Ground or Puff Rows; just make sure the Row prior to the Edging is a Shell row.

Model 1 (Cream solid color) is described below.

Model 2 (Garnet Heather with Cream) directions follow.

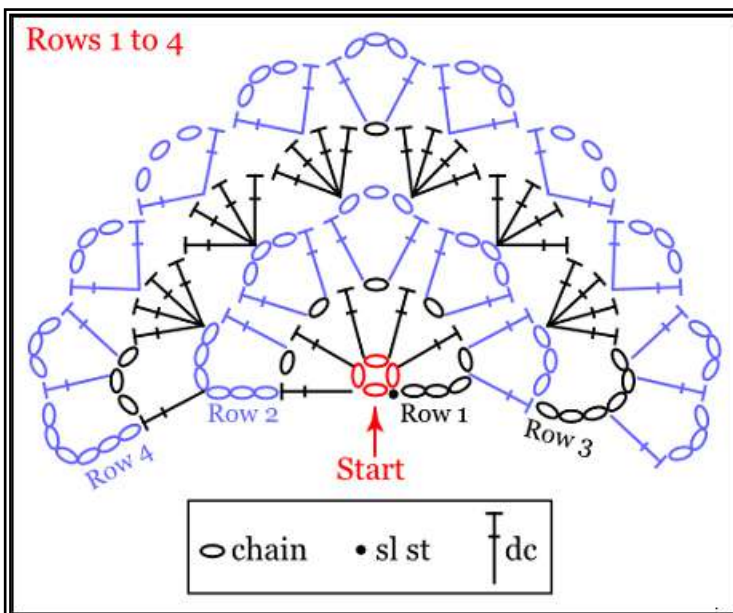
MODEL 1 (CREAM SOLID COLOR)

SHAWL GROUND

Starting at back of neck, with size G hook and Fingering weight yarn, (or H and DK) ch5 and join with a sl st to form a ring.

Row 1: Ch4 (counts as dc, ch1). (Dc in ring, ch1) 4 times, dc in ring. (6 dc, 5 ch1-sp)

Row 2: Ch6, turn, dc in 1st ch-sp (counts as a V), work a V in each of next 3 ch-sp, V in tch. (5 Vs)



(From now on, every row starts with "Ch6" and ends with "ch3, dc".)

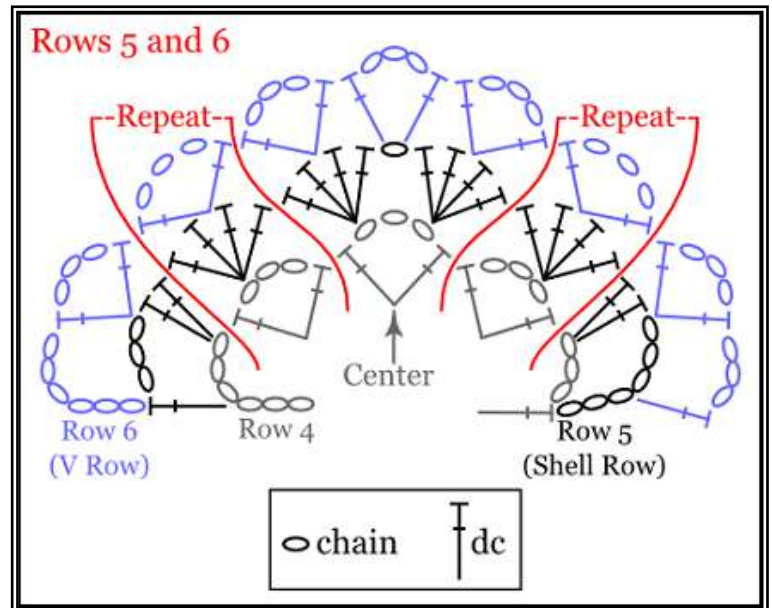
Row 3: Ch6, turn (counts as "dc, ch3", now and throughout ground). Shell in 1st ch-sp, shell in 2nd ch-sp, (shell, ch1, shell) in 3rd ch-sp, [place marker in ch1-sp to indicate center], shell in 4th ch-sp, (shell, ch3, dc) in tch. (6 shells, 2 dc, 2 ch3-sp, 1 ch1-sp)

(When you encounter the center marker, remove it, work specified stitches in center, then replace marker in center ch-sp to keep track of the center stitch)

Row 4: Ch6, turn. V in 1st ch-sp, V in each of next 3 shells, [remove marker], V in center ch1-sp, [place marker in ch3-sp of V], V in each of next 3 shells, (V, ch3, dc) in tch. (9 Vs, 2 dcs, 2 ch3-sps)

Row 5 (SHELL ROW on RS): Ch6, turn. Work 2 dcs in 1st ch-sp, shell in each V to center, (shell, ch1, shell) in center, shell in each V to tch, (2 dcs, ch3, dc) in tch. (10 shells, 2 half shells)

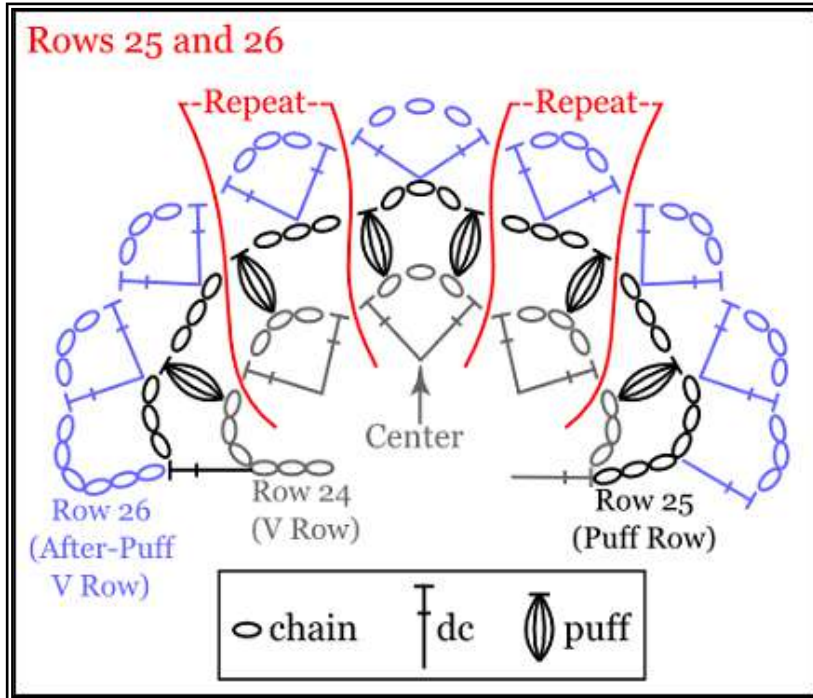
Row 6 (V ROW): Ch6, turn. V in 1st ch-sp, V in each shell to center ch1-sp, V in center ch1-sp, V in each shell to tch, (V, ch3, dc) in tch. (13 Vs, 2 ch3-sps, 2 dcs)



Rows 7-24: Repeat Rows 5 and 6 until shawl is 14" deep, measuring from center of neck down (or until you have used 1/3 of your yarn). Each row adds 2 shells or Vs.

INNER BORDER

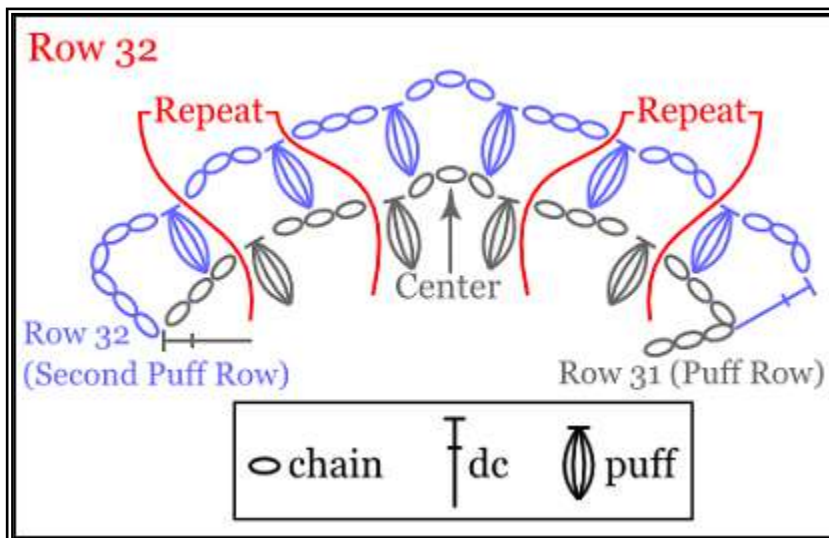
Row 25 (PUFF ROW): Ch6, turn. Puff in 1st ch-sp, ch3, (puff in next V, ch3) across to center V, (puff, ch3, puff) in center V, (ch3, puff in next V) across to tch, (puff, ch3, dc) in tch. (52 puffs)



Row 26 (AFTER-PUFF V ROW): Ch6, turn. V in 1st ch3-sp, V in each ch3-sp across to tch (no increase at center), (V, ch3, dc) in tch. (53 Vs, 2 ch3-sps, 2 dcs)

Row 27-30: Repeat Rows 5 & 6 twice. (54 shells + 2 half shells at end of Row 27, 58 shells + 2 half shells at end of Row 29)

Row 31: Repeat Row 25 (PUFF ROW). (64 puffs)



Row 32 (SECOND PUFF ROW): Ch6, turn. Puff in tch, ch3, (puff in next ch3-sp, ch3) across to center ch3-sp, (puff, ch3, puff) in center ch3-sp, ch3, (puff in next ch3-sp, ch3) across to tch, (puff, ch3, dc) in tch. (66 puffs)

(Break yarn and attach it to the opposite corner if you wish your future Shell Rows to continue to be on the Right Side.)

Row 33: Repeat Row 26 (AFTER-PUFF V ROW). (67 Vs, 2 ch3-sps, 2 dcs)

Rows 34-37: Repeat Rows 5 & 6 twice. (68 shells + 2 half shells at end of Row 34, 72 shells + 2 half shells at end of Row 36)

Rows 38: Repeat Row 25 (PUFF ROW). (78 puffs at end of Row 38)

Rows 39-40: Repeat Row 32 (SECOND PUFF ROW) twice. (80 puffs at end of Row 39, 82 puffs at end of Row 40)

Row 41: Repeat Row 26 (AFTER-PUFF ROW). (83 Vs, 2 ch3-sps, 2 dcs)

Rows 42-44: Repeat Rows 5 & 6 once, then repeat Row 5 once more. (84 shells + 2 half shells at end of Row 42, 88 shells + 2 half shells at end of Row 44)

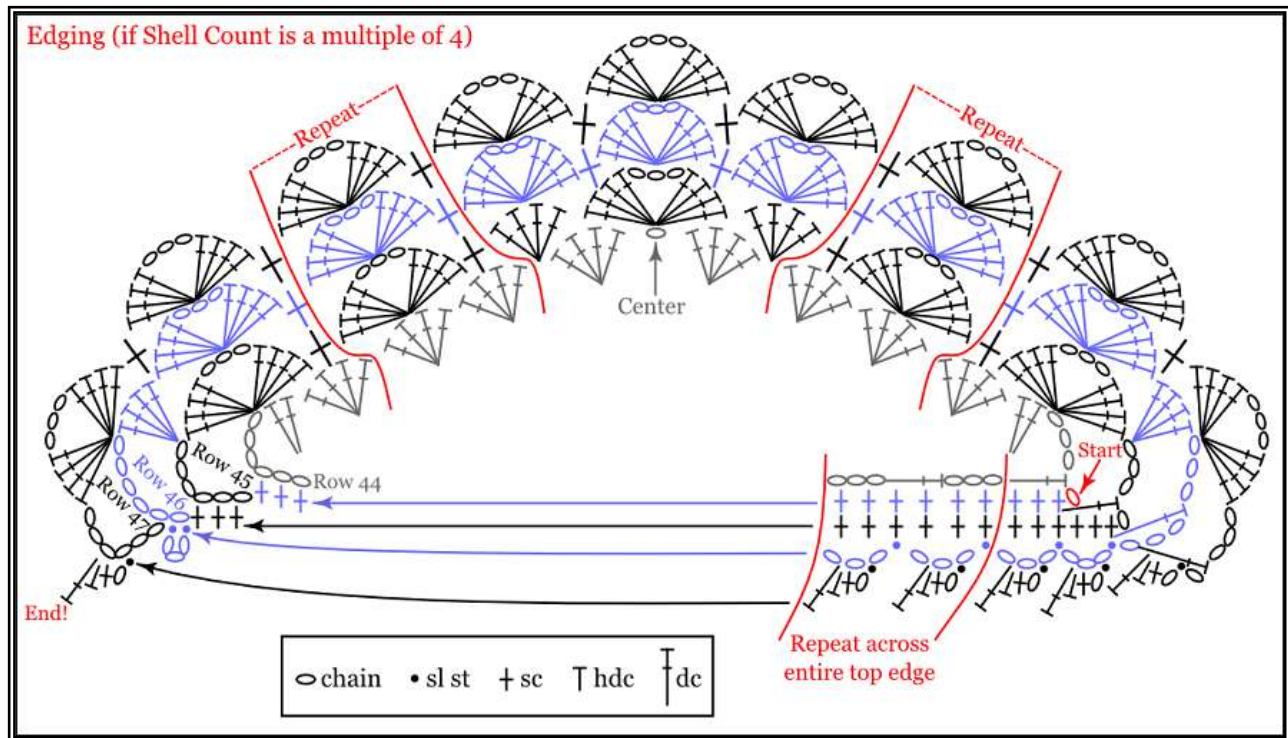
EDGING TO ENCIRCLE THE GROUND

Row 44 TOP: Turn work clockwise to work along top of shawl: Ch1, (sc in side of last dc of Row 44) 3 times, then work 2 scs in side of each row edge across top of shawl, ending with 3 scs in side of starting ch of Row 44.

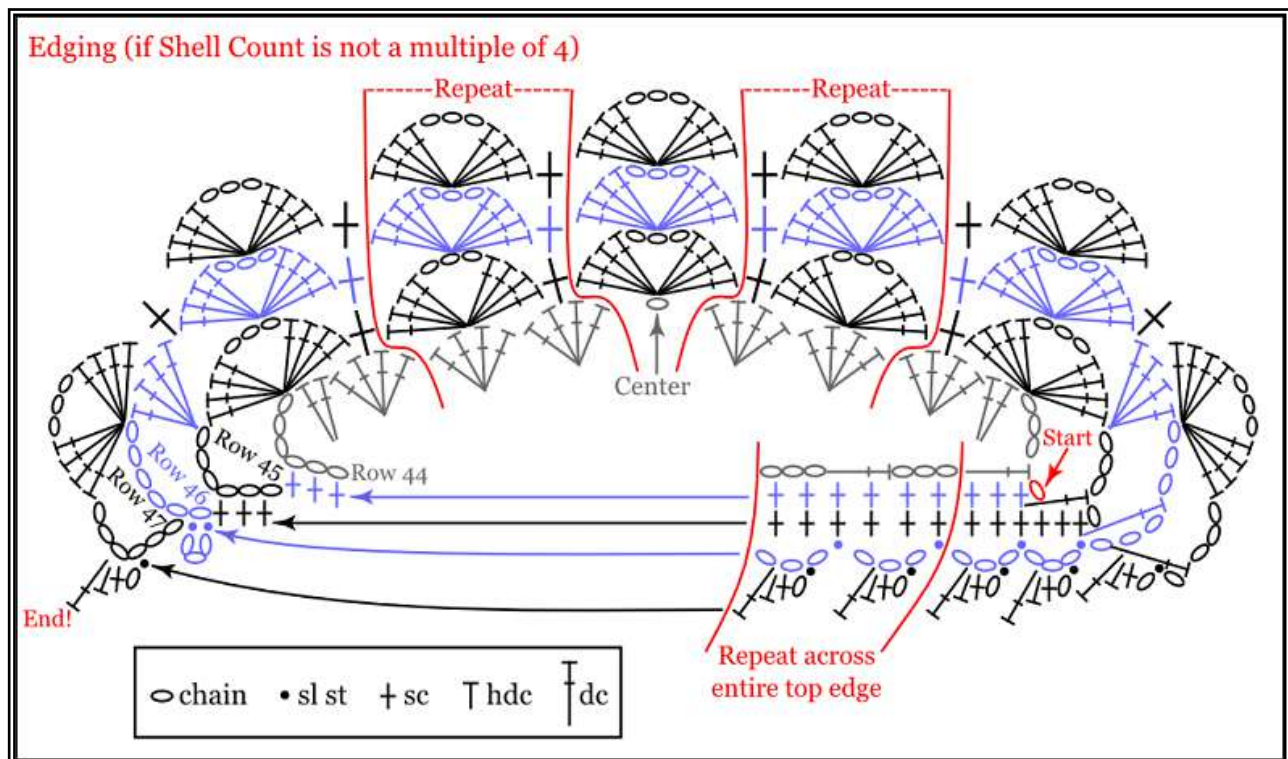
COUNT YOUR SHELLS! The last row across the bottom was a Shell Row. If following the pattern exactly, the count of Shells (excluding the half shells) is a multiple of 4 (such as 88). If however, you bravely struck out on your own, depending on the number of Puff Rows you worked, your Shell count might NOT be a multiple of 4 (it could be 78, or 86, for example). This is OK - if your Shell Count is NOT a multiple of 4, then SKIP THE UNDERLINED PARTS of Rows 45 & 46; if your Shell Count is 88 (or any other multiple of 4) then work all of Rows 45 & 46, including the underlined portion.

Row 45 BOTTOM: Turn work clockwise to work on RS along bottom of shawl: Ch6, crown in tch, sc in mid-shell, (crown in mid-shell, sc in mid-shell) across to center 2 shells, work 4 dcs in space before 1st center shell, crown in ch1-sp between the 2 center shells, work 4 dcs in space after 2nd center shell, (sc in mid-shell, crown in mid-shell) across to last shell, sc in mid-shell, crown in end ch-sp, ch3, dc in 1st sc of Row 44 TOP. (45 crowns, 2 four-dc shells)

Row 45 TOP: Turn work clockwise to work again along top of shawl: Ch1, work 3 scs in side of last dc made at end of Row 45 BOTTOM, work 1 sc in each sc across row, work 3 scs in side of starting ch of Row 45 BOTTOM.



Row 46 BOTTOM: Turn work clockwise to work again on RS along bottom of shawl: ch6, work 4 dcs in 1st ch-sp, (crown in crown, sc in sc) across to 4dc-shell prior to center crown, work crown in mid-shell, sc between 2nd and 3rd dcs of 1st half of center crown, crown in center crown, sc between 2nd and 3rd dcs of 2nd half of center crown, crown in mid-shell of 4dc-shell after center crown, (sc in sc, crown in crown) across to end ch-sp, work 4 dcs in end ch-sp, ch3, dc in 1st sc of Row 45 TOP. (47 crowns, 2 four-dc shells)



Row 46 TOP: Turn work clockwise to work again along top of shawl: ch3, sl-st in 1st sc, (ch3, skip 2 scs, sl-st in next sc) across top edge to starting ch of Row 46 BOTTOM, (sl-st, ch3, sl-st) in side of starting ch of Row 46 BOTTOM.

Row 47 BOTTOM: Turn work clockwise yet again to work on RS along bottom of shawl: Ch6, work crown in 1st ch-sp, sc in space between 4dc-shell and 1st 4dcs of 1st crown, (crown in crown, sc in sc) across to last crown, crown in last crown, sc in space between last crown and 4dc-shell, crown in end ch-sp, ch3, dc in first ch3 of Row 46 TOP. (49 crowns)

Row 47 TOP: Turn work clockwise one more time and work the last row along the top edge of shawl: ch1, (sl-st, ch1, sc, hdc, dc) in side of last dc just made at end of Row 47 BOTTOM, (sl-st, ch1, sc, hdc, dc) in each ch3-sp across top edge to end, (sl-st, ch1, sc, hdc, dc) in side of starting ch of Row 47 BOTTOM.

FINISHING

Cut yarn, weave in ends. Block shawl.

MODEL 2 (GARNET HEATHER WITH CREAM)



- Using Garnet color yarn, follow above directions through Row 24, then work an additional Shell row in Garnet.
- Change to Cream color yarn and work a V row, a Puff row, and an After-Puff row.
- Change to Garnet and work a Shell row, a V row, and a Shell row.
- Work Row 44 Top using Garnet.
- Change to Cream color and continue directions from Row 45 Bottom, skipping the underlined text in Rows 45 Bottom and 46 Bottom.

Charts courtesy of Aparna Rolfe.

Copyright MADuNaier 2013 - Make them to wear, give, or sell, but please don't sell or distribute my pattern!

This is my 52nd pattern in 52 weeks on Ravelry, free to all as a Thank You for your support and encouragement!